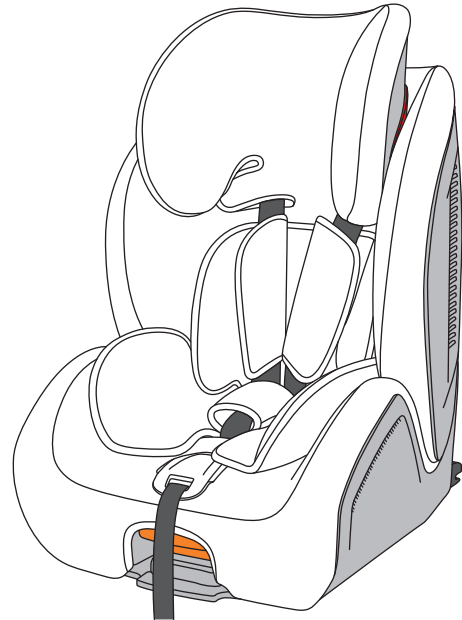


# BABY Safety Seat

Applicable for  
**9-36KG**



Read the instruction carefully before using the baby car seat. Keep this instruction well for future reading.  
This corporate is certificated by ISO9001:2008.

## Warranty policy and warranty card

The warranty period shall be one year from the date of purchase, and the warranty scope shall include factory manufacturing problems or material problems. The warranty card is an important warranty certificate. Please keep it properly during the warranty period. At the same time, please keep your sales voucher and relevant documents.

Once the quality problem is found, please send the warranty card with the product and ensure the product is clean. Quality problems are limited to the defects of the product itself.

### Warranty does not cover:

- Damaged caused by natural phenomena in the process of use, or the damage of car seats caused by excessive pressure.
- Improper or incorrect use of car seat damage to children's car.
- The damage caused in traffic accidents to the baby car seat.

### Warranty coverage:

**Fabric:** all the materials we use meet high color durability requirements, but UV radiation can still discolor the material. This situation is not the problem of the material itself, but the normal wear and tear, we do not provide the warranty.


**Safety clasp:** we do not provide warranty for safety lapses caused by accumulated dirt or dust.

Once you find the quality problem, please contact the local retailer directly. The depreciation rate of the product will be taken into account when handling claims.

<b>warranty card</b>	<b>Name</b>		<b>Phone</b>	
	<b>City</b>		<b>Post Code</b>	
	<b>Email</b>		<b>Address</b>	
	<b>Model</b>		<b>Type</b>	
	<b>Color</b>		<b>Retailer</b>	
	<b>Purchasing time</b>		<b>Signature</b>	

## Notice

- This is a "Universal" child restraint. It is approved to Regulation No. 44, 04 series of amendments, for general use in vehicles and it will fit most, but not all, car seats.
- A correct fit is likely if the vehicle manufacturer has declared in the vehicle handbook that the vehicle is capable of accepting a "Universal" child restraint for this age group.
- This child restraint has been classified as "Universal" under more stringent conditions than those which applied to earlier designs which do not carry this notice.
- Only suitable if the approved vehicles are fitted with 3-point safety-belts, approved to UN/ECE Regulation No. 16 or other equivalent standards.
- This is an ISOFIX CHILD RESTRAINT SYSTEM. It is approved to Regulation No. 44, 04 series of amendments for general use in vehicles fitted with ISOFIX anchorages systems.
- It will fit vehicles with positions approved as ISOFIX positions (as detailed in the vehicle handbook), depending on the category of the child seat and of the fixture.
- The mass group and the ISOFIX size class for which this device is intended is: Group I, ISOFIX size class B1.
- If in doubt, consult either the child restraint manufacturer or the retailer.

 **Warning** Please read this instruction and the relative part of your vehicle manual. Please follow this instruction while installing and using this baby car seat. Not following this instruction may lead to a severe injury or death to your child. Please keep this instruction in a safe place in case of future reading.

The product image on the manual is for reference only, please in kind prevail.

## CONTENT

<b>1 Application</b> .....	<b>03</b>
<b>2 Using Note</b> .....	<b>03</b>
<b>3 Application and installation</b> .....	<b>05</b>
<b>4 Parts of Baby Safety Seat</b> .....	<b>06</b>
<b>5 Main Functions of Baby Safety Seat</b> .....	<b>08</b>
5.1 Angle adjustment .....	08
5.2 Backrest Adjustmentt .....	08
5.3 Instructions Storage Cover .....	08
5.4 Crotch belt position adjustment .....	09
<b>6 Baby Car Seat Installation and Children Fixation for Group 1</b> .....	<b>09</b>
6.1 Baby Car Seat ISOFIX+Top Tether Fixation .....	09
6.2 Children Fixation on 5-Point Harness System .....	11
<b>7 Remove of the baby car seat</b> .....	<b>12</b>
<b>8 Group2,3 baby car seat installation and fixation of children</b> .....	<b>12</b>
<b>9.Maintenance of baby car seat</b> .....	<b>14</b>
9.1 Attention .....	14
9.2 Cleaning of cloth cover .....	14
9.3 Dismantlement of cloth cover and 5 points harness .....	14
9.4 Installation of cloth cover and 5 points harness .....	16

## 1. Application scope

Certificated by ECE R44/04 and GB27887-2011, this baby safety seat is applicable for Group I II III.

Baby Safety Seat	Group	Range of baby weight
BC788F	I II III	9-36kg

## Certification

●This baby safety seat is designed and tested with the European Children Rstraint System standard (ECE R44/04) a. The certification stamp E- mark (in the round circle) with approval number .

●It ' s dangerous to make any alterations or additions to the device without the approval of the Type Approval Authority, also dangerous not to follow closely the installation instructions provided by the child restraint manufacturer.

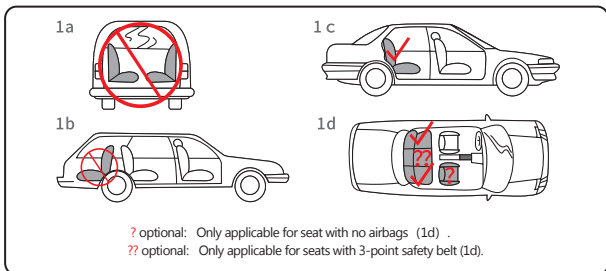
## 2.Using Note

**⚠ Warning** ●Please read this instruction very carefully before using this car seat. Not following this instruction may lead to a injury to your baby.

- Using car seat correctly is very important to your baby.
- Please keep the instruction well of convenience in the future.
- Do not leave your baby alone in this baby safety seat in your car.
- Installing to a seat of your car which has a SRS system is forbidden.
- Any straps holding the restraint to the vehicle should be tight, that any straps restraining the child should be adjusted to the child's body, and that straps should not be twisted.
- Ensure that any lap strap is worn low down, so that the pelvis is firmly engaged, shall be stressed.

## Baby safety seat

- DO NOT use the product in seating positions where an active frontal airbag installed.
- Do not attempt to remove the child car seat label, containing important information on the label.
- This baby car seat must be used in the car seat approved by ECE R16 or other equivalent standards and must be equipped with safety belt system.
- After crash accident, the damage of the baby car seat may not be found instantly, but it is not safe anymore, therefore, please change a new one.
- This baby car seat need to be fixed well with safety belt or ISOFIX +Top tether, because even if they don't use baby car seat, in the crash or the brake, unsecured baby car seat may hurt the other passengers.
- Do not use any lubricant to the moving parts of the car seat.











- DO NOT use this seat on side-facing or rear-facing car seats (1a 1b in drawing above). Only applicable for forward-facing car seats. Can be only used as a front facing child safety seat. Crash statics shows that children are safer in back row seats (1c, 1d).
- The rigid parts and plastic parts of child restraint system should be correctly placed and installed to ensure that child restraint system is not jammed by active seat or door in normal vehicle use.

## User manual



- 2-point car belt is forbidden to fix your baby.
- Do not leave baby alone on the car seat.
- When the chair is not provided with a textile cover, the chair should be kept away from sunlight, otherwise it may be too hot for the child's skin.
- Car seat without cloth cover cannot be used, cloth cover not provided by manufacturer cannot be used, it influences the performance of a car seat.
- DO NOT use any load bearing contact points other than those described in the instructions and marked in the child restraint.

## 3.Comparison table of children's range of application and installation methods

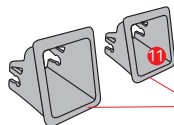
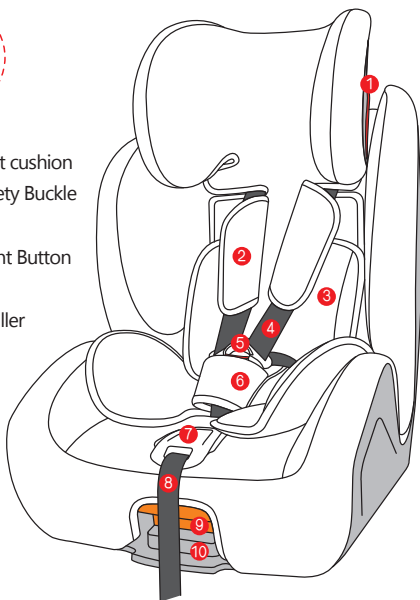
Group	Weight	Installation Direction	Children Fixation	Angle Level	Baby safety Seat Installation
	9-18kg(9 months-4yo)	Forward facing installation 	5-point safety belt 	Level 1/2/3/4 	ISOFIX +Top Tether 
	15-36kg(3-12yo)	Forward facing installation 	Car seat belt 	Level 1 	Safety seat belt 

## 4. Parts of Baby Car Seat

① Headrest Belt Guide Sleeve

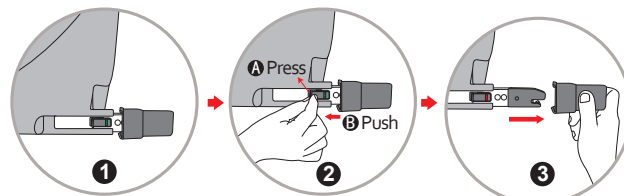
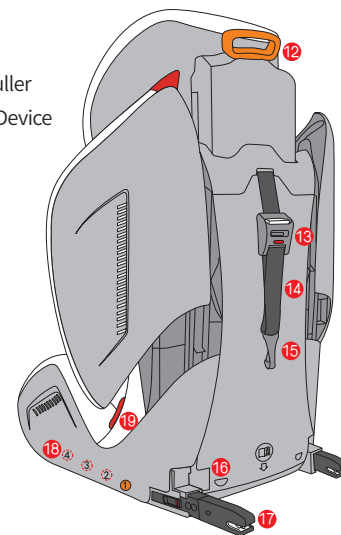


- ② Shoulder Pad    ③ Seat cushion
- ④ Safety belt    ⑤ Safety Buckle
- ⑥ Crotch Pad
- ⑦ Safety Belt Adjustment Button
- ⑧ Adjustment Belt
- ⑨ Angle Adjustment Puller
- ⑩ ISOFIX Release Key



⑪ ISOFIX Guide Cover

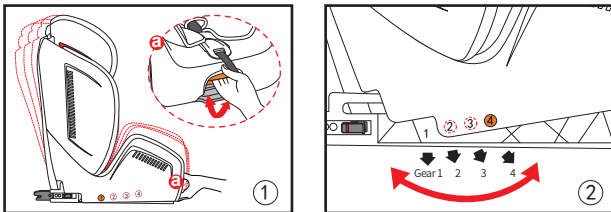
- ⑫ Headrest Adjustment Puller
- ⑬ Top Tether Adjustment Device
- ⑭ Top Tether
- ⑮ Top Tether Pothook
- ⑯ Back cover
- ⑰ ISOFIX Connectors
- ⑱ Gears
- ⑲ Belt Guide Sleeve



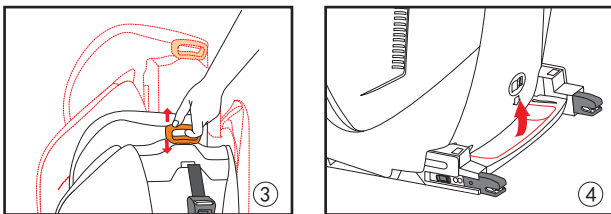
**Warm Prompt**

The state of baby car seat is shown in the picture (figure 1). Please remove the ISOFIX protector before using the baby car seat, operation method (refer to figure 2,3)

## 5. Main Functions of Baby Safety Seat



**5.1 Angle Adjustment** ● Hold the angle adjustment puller in the front part of the base, push the car seat forward or backward to recline (Picture 1).  
 ● Make the Indicator Arrow indicating position "1" "2" "3" "4", release the angle adjustment puller until you hear a "click" (Picture 2).



**5.2 Backrest Adjustment** ● 10-level backrest adjustments, pull the headrest adjustment puller in the back of the headrest, and release the puller until it matches Children's height (Picture 3).

*Note: When adjusting backrest height, you need to release or remove the five-point harness system.*

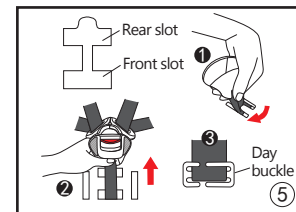
**5.3 Instructions Storage Cover** ● When you are not using the Instructions, Pull the car seat to Gear 4 and you can take it out (Picture 4).

*Note: To avoid the risk of loss, please keep the User's Instruction in the Storage Cover when you are not using it.*

## 5.5 Crotch belt position adjustment

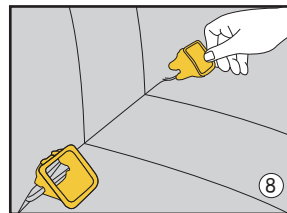
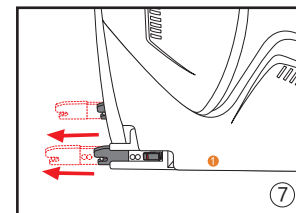
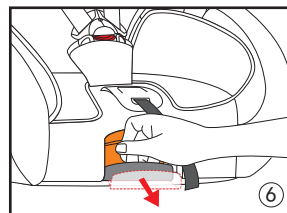
● Crotch belt clings tightly with the backrest groove when it is produced. when you put baby in the car seat and feel it is too close to baby's crotch, pinch the crotch belt to a twisted status and make it through the slot (Picture 5).

*Note: Make sure they are not wrapped.*



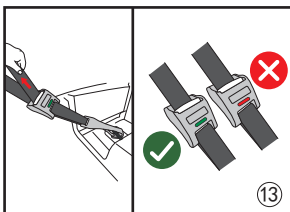
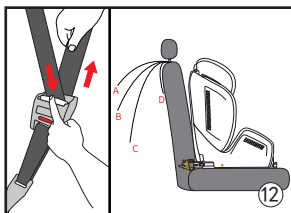
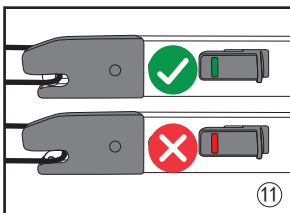
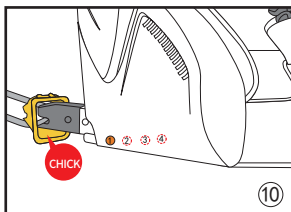
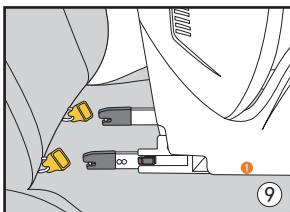
## 6. Baby Car Seat Installation and Children Fixation for Group 1

### 6.1 Baby Car Seat ISOFIX+Top Tether Fixation (Applicable for Group 1, Weight 9-18kg, Age 9 months to 4 years old)



● Pull the ISOFIX release key, ISOFIX Connection Parts will pop out (Picture 6,7).

● Fix ISOFIX guide sleeves in the car seat anchors (Picture 8).



● Check the ISOFIX unlock key, "Green" indicates "Locked" and "Red" indicates "Unlocked" (Picture 16).

● Press top tether adjustment button, and pull the top tether until the hook in the back of the vehicle seat (Picture 17).

**Note:** Possibly there are 4 top tether anchors in the back of the vehicle seat A/B/C/D, you can choose a proper one.

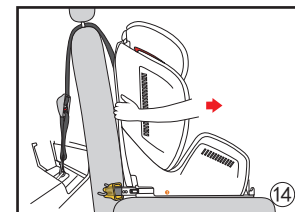
● Hold the other end of the top tether and tighten it (Picture 18).

**Note:** "Green" in the release key indicates "Fixed well" "Red" indicates "Not Fixed Well".

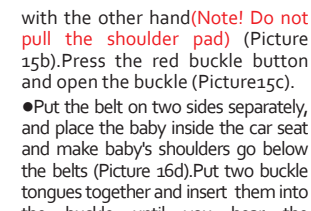
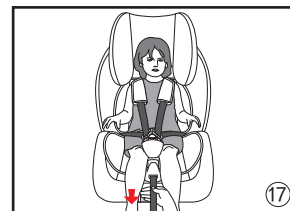
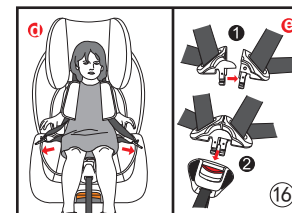
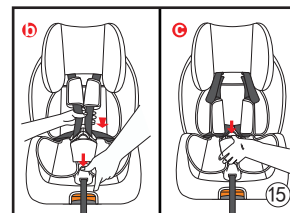
● Push the Car Seat Base (Picture 9). Until you hear the "Click", which indicates that ISOFIX connectors are locked with car seat anchors (Picture 10).

**Note:** Before fixing the baby car seat, please adjust the backrest angle suitable for children.

● Pull the baby car seat outward, and make sure both sides are securely locked (Picture 21).



## 6.2 Children Fixation on 5-Point Harness System ( Applicable for Group 1, Weight 9-18kg, Age 9 months - 4years old)



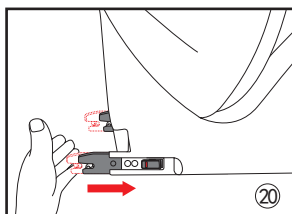
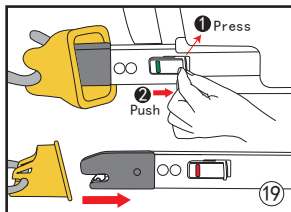
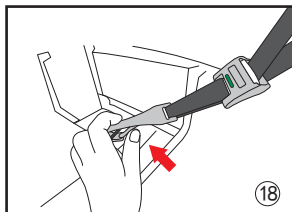
with the other hand (Note! Do not pull the shoulder pad) (Picture 15b). Press the red buckle button and open the buckle (Picture 15c).

● Put the belt on two sides separately, and place the baby inside the car seat and make baby's shoulders go below the belts (Picture 16d). Put two buckle tongues together and insert them into the buckle until you hear the "Click" (Picture 16e).

● Tighten the safety belt (Picture 17).

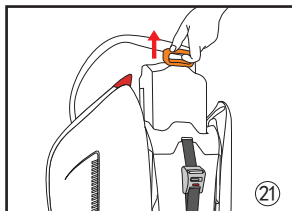
● Extend the safety belt — push the central adjuster with one hand and pull outward the safety belts

## 7. Remove of the baby car seat

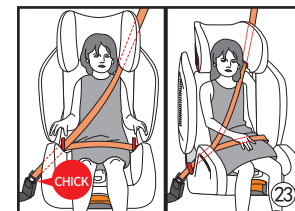
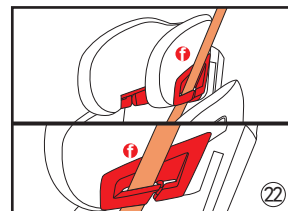


- Loosen the top tether fixation hook (Picture 18).
- ISOFIX unlock key button, at the same time, with the hand push ISOFIX unlock button, red, is to unlock, can make children car seats and car seat (Picture 19).
- Fold ISOFIX fittings (Picture 20).

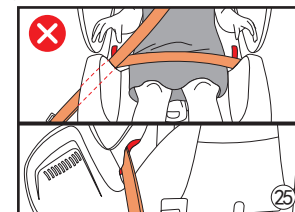
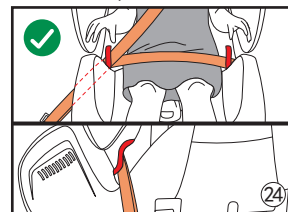
## 8. Group 2,3 baby car seat installation and fixation of children (applicable for 2,3 group, 15-36 kg body weight, age from 3 to 12 years old)



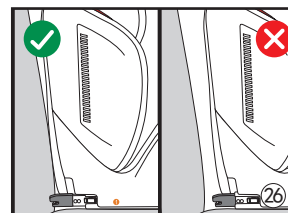
- Adjust the baby car safety seat backrest to suit children height (Picture 21).



- Put the adjusted child car seat on the car seat, put the children in the child car seat, pull out the car seat belt, let the car seat belt shoulder strap pass through the headrest seat belt guide slot (Picture 22).
- Keep the belt strap passing through the base belt guide slot, buckle up the car seat belt buckle, until you hear "click" (Picture 23).



- The car seat belt shall pass under the red base belt guide groove, not through above the guide groove (Picture 24, 25).



- The correct position of the fixed child car seat on the car seat is the backrest of the car seat (Picture 26).



## 9. Maintenance of baby car seat

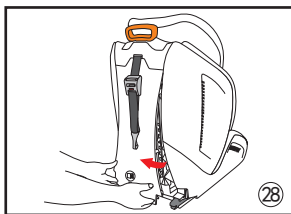
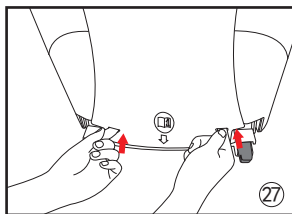
### 9.1 Attention

- Accidents happened when the car speed higher than 10km/h, may cause invisible damage to the baby safety seat. Please change your baby safety seat after crash accident.
- Check all important parts regularly, make sure all mechanism functions properly.
- To avoid damage, make sure no part of this baby seat is stuck by car door, foldable car seat or any other objects.
- Store your baby car seat in safe place when not using. Avoid heavy objects, direct sunshine or direct heat on it.

### 9.2 Cleaning of cloth cover

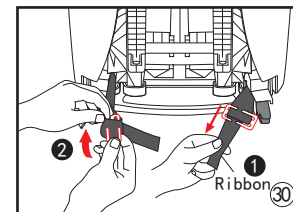
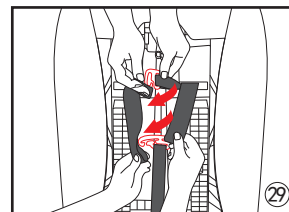
**⚠ Do not use baby car seat without cloth cover.**

- Cloth cover can be removed. Wash it with a mild detergent in warm water (water temperature does not exceed 30 °C), natural dry, not dehydration.
- Plastic parts can be cleaned with soap and water, do not use strong detergents (such as solvent).
  - Eat belt can apply mild soap to clean.
- Shoulder strap can be removed with mild soap water to clean.

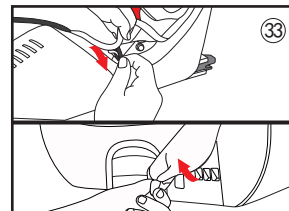
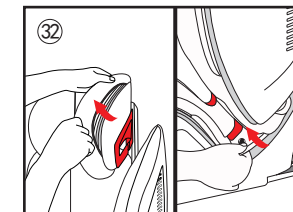
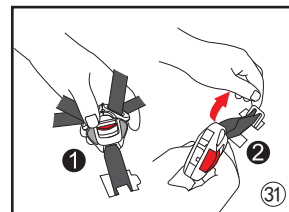


### 9.3 Dismantlement of cloth cover and 5 points harness

- Put hands onto the bottom of the chair, and pull out the cover, then, it opens the back cover on the back of the chair (Picture 27, 28).



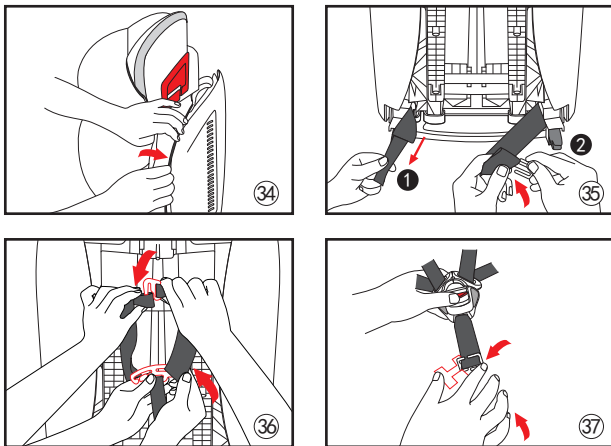
- Take off the safety belt from T buckle, and take off the hook from the polypropylene belt on shoulder pad (Picture 29).
- Back of chair, and take off the Tri-glide buttons, then, take off the safety belt (Picture 30).



- Using fingers to pinch the crotch belt and warp it, and using I-shaped slot, take off the crotch belt (Picture 31).
- Pull out of head rest, backrest, fabric on the base, release the fabric fixed buckle and the fabric fixed elastic cord, and then, take off the whole fabric on chair (Picture 32, 33).

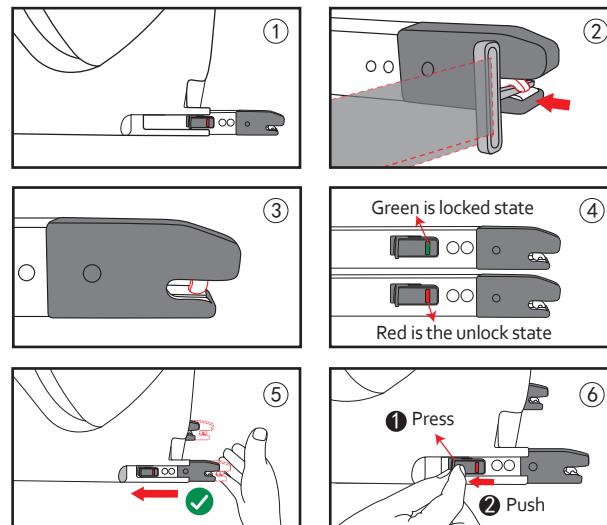
### 9.4 Installation of cloth cover and 5 points harness

- Put the fabric on the main body of the chair, stuff the fabric into the main body along the edge, fix the fabric fixed elastic cord and the buckle (Picture 34).
- Put the safety belt go through the hole of the safety belt on the base of chair, and using tools to pull out the safety belt from the backrest, and using Tri-glide button to fix it (Picture 35).



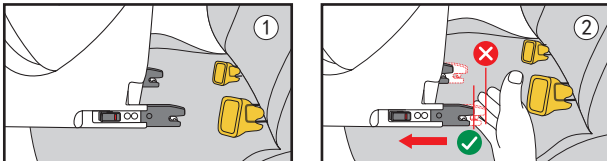
- Put the shoulder pad on the safety belt, and take both the safety belt and shoulder pad polypropylene belt through the hole on the backrest of the chair, fix the hook on the shoulder pad polypropylene belt, and fix the safety belt with T-buckle, and install the back cover on the backrest of the chair (Picture 36).
- Stuff the Tri-glide button into the I-shaped slot, and pull it upward, and then, it finishes the installation of the baby car seat (Picture 37).

### Solution for accidental pop up of ISOFIX connector



- ⚠ Warning** ●ISOFIX connector accidentally pops out when it is not necessary to connect the car seat (figure 1)
- Please attach the key (on the top tether of the backrest) of top tether to the ISOFIX hook (figure 2), so that ISOFIX connector is locked (figure 3, 4).  
*Note: the ISOFIX connector shows green as the locking state and red as the unlocking state.*
  - Push the ISOFIX connector to the inner side of the baby car seat and press to unlock it, in order to match the car seat ISOFIX U type connection hook later (figure 5,6)

### Cautions for baby car seat installation



When returning the ISOFIX connector, be sure to push it to the innermost state so that it can be released normally when used next time .

- Warning**
- When installing the baby car seat ISOFIX connector and the ISOFIX fixed hook of the car , if the ISOFIX connector is not completely recovered, ISOFIX connector cannot be released (figure 1)
  - Please push the ISOFIX connector to the position (figure 2), and the ISOFIX connector will be popped out .

When releasing the ISOFIX connector, if the ISOFIX connector can't pop out to the outermost end normally, please pull the ISOFIX connector to the outermost end manually .

### Warning

- When installing the baby car seat ISOFIX connector and the ISOFIX fixed hook of the car, if the ISOFIX connector can't popped out completely (figure 1).
- Please pull the ISOFIX control handle with one hand and pull the ISOFIX connector by the other hand until the outermost end appear the green unlock key, otherwise Leakage of the green unlock key will not work otherwise the ISOFIX fixed hook can't be locked (figure 2,3).

