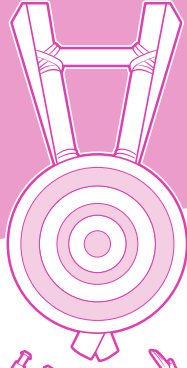
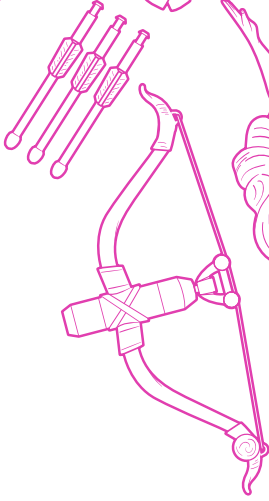
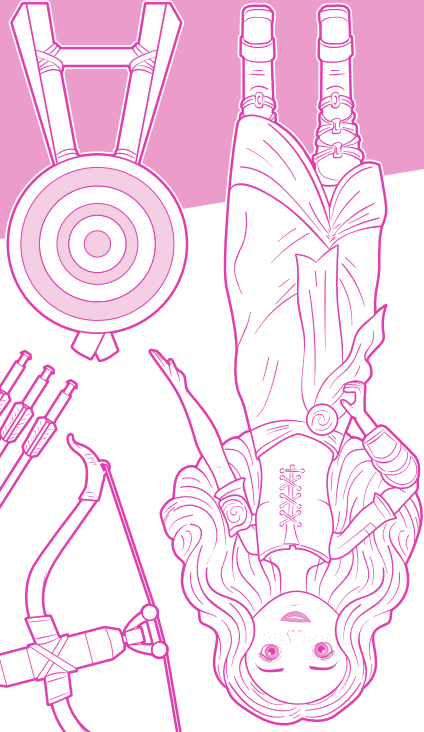


0916B9147EU4B9146

© Disney. © 2016 Hasbro. All rights reserved. Tous droits réservés. Hasbro SA, Rue Emile-Boéchat 31, 2800 Delémont CH, Hasbro Europe, 4 The Square, Stockley Park, Uxbridge, UB11 1ET, UK. © Urecht Firma Biglert, Hasbro SA, Rue Emile-Boéchat 31, 2800 Delémont Suisse ☎ +41 324210800. Hasbro Oyuncak San. ve Tic. A.Ş. tarafından ithal edilmiştir. Burhanıye Mah. Abdülhaga Cad. No: 51/2 34676 Beylerbeyi İstanbul Türkiye ☎ +90 2164229010.



Hasbro



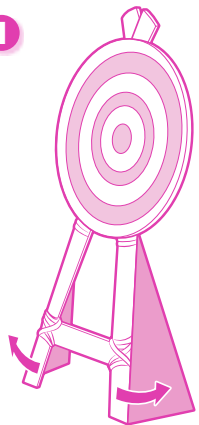
# Disney Princess

- 001 Doll cannot stand on its own.
- 002 Les poupées ne tiennent pas debout toutes seules.
- 003 Die Puppe kann nicht selbstständig stehen.
- 004 La muñeca no se para sola.
- 005 A boneca precisa de ajuda para ficar em pé.
- 006 La bambola non resta in piedi da sola.
- 007 De pop kan niet zelfstandig staan.
- 008 Döcken kan inte stå själv.
- 009 Dükken vil ikke selv stå.
- 010 Dükken ståt ikke av seg selv.
- 011 Mükke ei seiso yksinään.
- 012 H kookka öev imopel va otobet jövov tñç.
- 013 Lalka nie potrañ stac samodzielnie.
- 014 A baba támasz nélkül nem képes tápon állni.
- 015 Oyuncak bebek tek başına ayakta duramaz.
- 016 Panhka nebude stát osamocemé.
- 017 Bábika nebude stát sama.
- 018 Pápua nu se poate susține singură.
- 019 Kyrna ne može samostalno stajati.
- 020 Lalka ne može samostalno stajati.
- 021 Leté pati nestoví.
- 022 Lalka ne bo stala samostojno.
- 023 Lalka ne stoji sama.
- 024 Lalka nie potrañ stac samodzielnie.

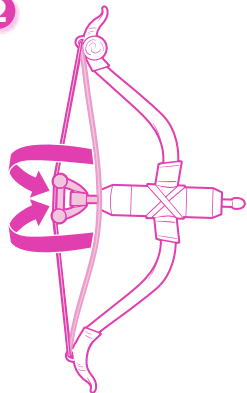
025 لن تطفن الالقة دون مساعدة.

Hasbro

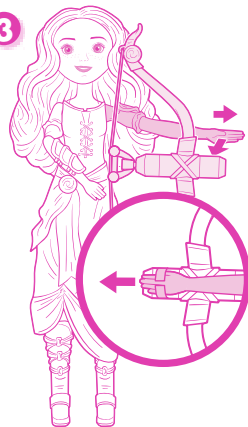
1



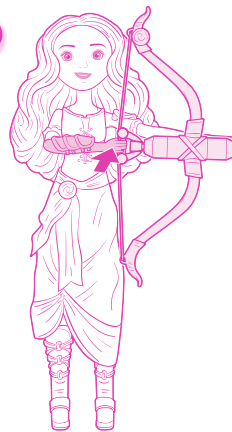
2



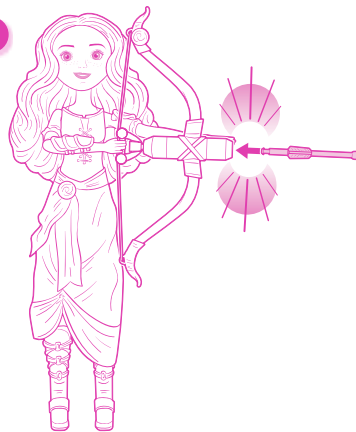
3



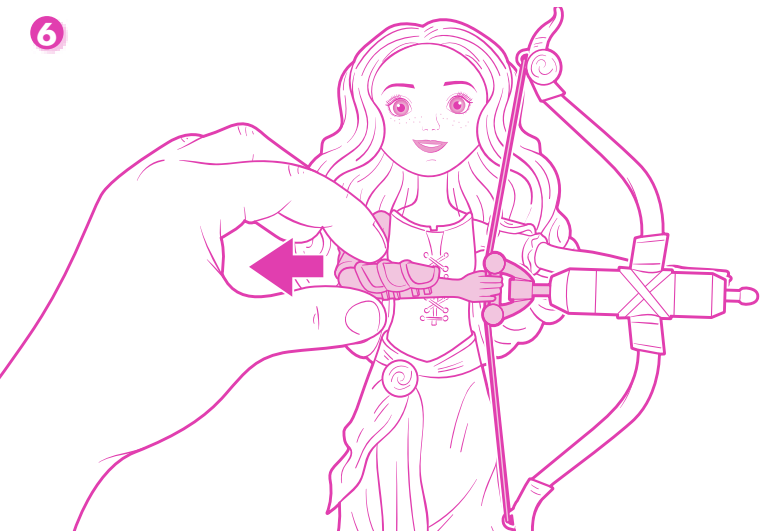
4



5



6



7

